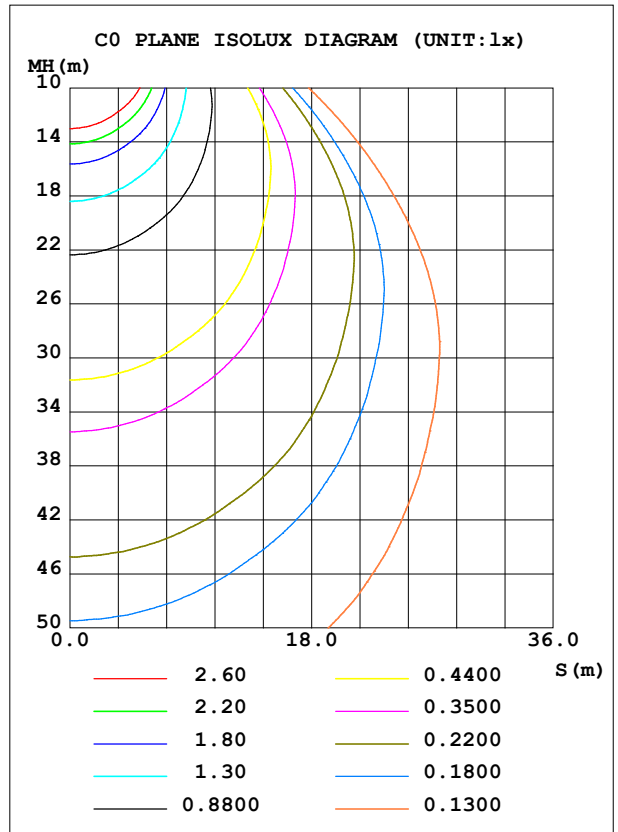
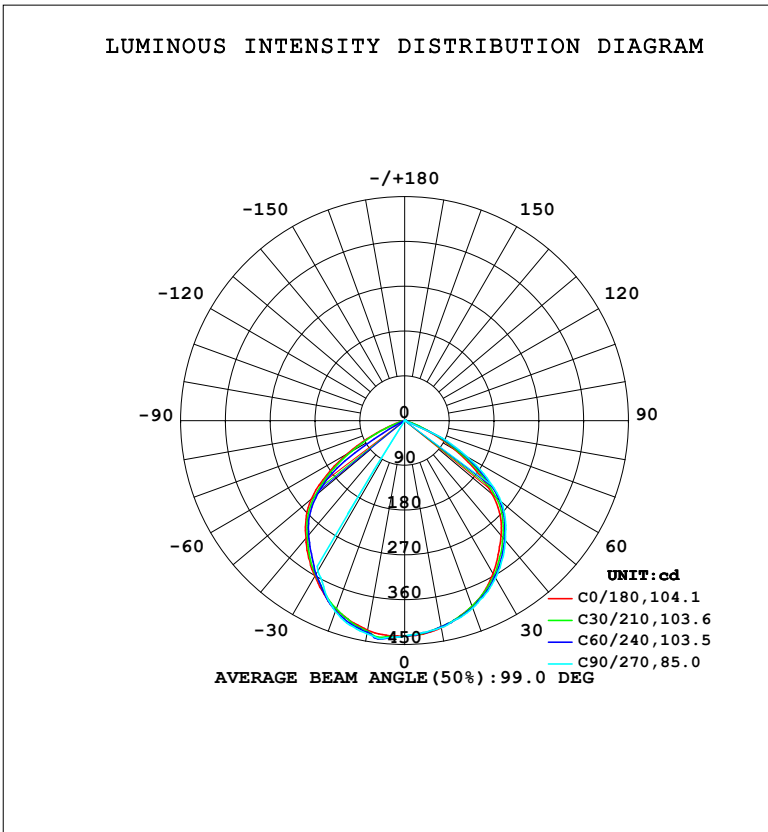


LUMINAIRE PHOTOMETRIC TEST REPORT

Test:U:220.34V I:0.0814A P:10.492W PF:0.5852 Freq:50.00Hz Lamp Flux:911.943x1 lm		
NAME:	TYPE: 斜角135度	WEIGHT:
SPEC.:	DIM.:	SERIAL No.:
MFR.: EVERFINE	SUR.:	Shielding Angle:

DATA OF LAMP		PHOTOMETRIC DATA				Eff: 86.92 lm/W
MODEL	MB18-C021	I _{max} (cd)	443.4	S/MH (C0/180)	1.24	
NOMINAL POWER (W)	10	LOR (%)	100.0	S/MH (C90/270)	0.88	
RATED VOLTAGE (V)	220	TOTAL FLUX (lm)	911.99	η UP, DN (C0-180)	0.0, 55.2	
NOMINAL FLUX (lm)	911.943	CIE CLASS	DIRECT	η UP, DN (C180-360)	0.0, 44.8	
LAMPS INSIDE	1	η up (%)	0.0	CIBSE SHR NOM	1.00	
TEST VOLTAGE (V)	219.5	η down (%)	100.0	CIBSE SHR MAX	1.10	



C Range: 0 - 360DEG
 C Interval: 15.0DEG
 Test Speed: HIGH
 Temperature: 25.3°C
 Operators: DAMIN
 Test Date: 2024-06-11

γ Range: 0 - 90DEG
 γ Interval: 1.0DEG
 Test System: EVERFINE GO-2000B_V1 SYSTEM V2.00.473
 Humidity: 65.0%
 Test Distance: 9.401m [K=1.0000]
 Remarks:

ZONAL FLUX DIAGRAM

ZONAL FLUX DIAGRAM:

γ	C0	C45	C90	C135	C180	C225	C270	C315	γ	Φ zone	Φ total	%lum,lamp
10	422.9	421.7	422.3	420.8	427.6	431.2	434.8	428.2	0- 10	41.11	41.11	4.51,4.51
20	396.8	399.1	400.7	396.0	403.7	401.9	408.0	399.8	10- 20	117.2	158.3	17.4,17.4
30	355.1	363.2	365.8	360.9	360.5	357.1	349.1	354.0	20- 30	175.5	333.8	36.6,36.6
40	301.2	312.3	315.2	308.9	309.0	300.3	0.5742	300.3	30- 40	194.1	527.9	57.9,57.9
50	229.6	247.9	253.4	244.4	244.4	230.0	0.4344	226.6	40- 50	183.1	711.1	78,78
60	116.0	135.1	144.2	131.6	132.0	115.8	0.4043	114.4	50- 60	141.4	852.4	93.5,93.5
70	19.44	11.97	1.829	20.69	25.44	18.55	0.3962	18.17	60- 70	54.31	906.7	99.4,99.4
80	2.995	2.268	0.9803	1.145	0.6043	0.3622	0.3902	0.2302	70- 80	4.089	910.8	99.9,99.9
90	0.3435	0.7377	0.4473	0.6542	0.2962	0.3538	0.3325	0.3150	80- 90	1.156	912.0	100,100
100									90-100			
110									100-110			
120									110-120			
130									120-130			
140									130-140			
150									140-150			
160									150-160			
170									160-170			
180									170-180			
DEG	LUMINOUS INTENSITY:cd									UNIT:lm		

Conical surface Flux(90deg): 621.88 lm

%lum = 68.2%

%lamp = 68.2%

Conical surface Flux(130deg): 891.86 lm

%lum = 97.8%

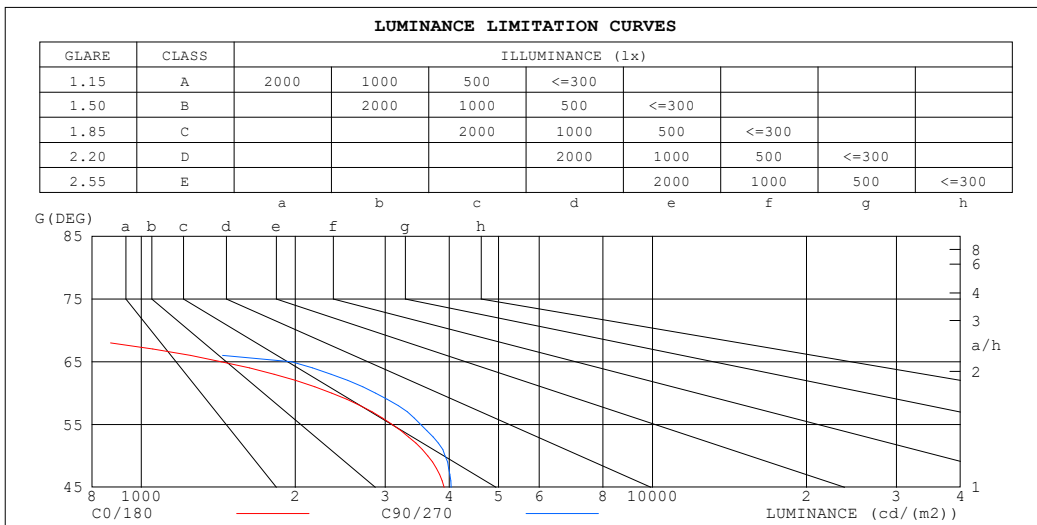
%lamp = 97.8%

C Range: 0 - 360DEG
 C Interval: 15.0DEG
 Test Speed: HIGH
 Temperature:25.3°C
 Operators:DAMIN
 Test Date:2024-06-11

γ Range: 0 - 90DEG
 γ Interval: 1.0DEG
 Test System:EVERFINE GO-2000B_V1 SYSTEM V2.00.473
 Humidity:65.0%
 Test Distance:9.401m [K=1.0000]
 Remarks:

LUMINANCE LIMITATION CURVES

Test:U:220.34V I:0.0814A P:10.492W PF:0.5852 Freq:50.00Hz Lamp Flux:911.943x1 lm		
NAME:	TYPE: 斜角135度	WEIGHT:
SPEC.:	DIM.:	SERIAL No.:
MFR.: EVERFINE	SUR.:	Shielding Angle:



LUMINANCE cd/(m2)		
G (DEG)	C0/180	C90/270
85	49	111
80	175	56
75	16	47
70	578	53
65	1434	1968
60	2359	2872
55	3096	3519
50	3632	3926
45	3912	4036

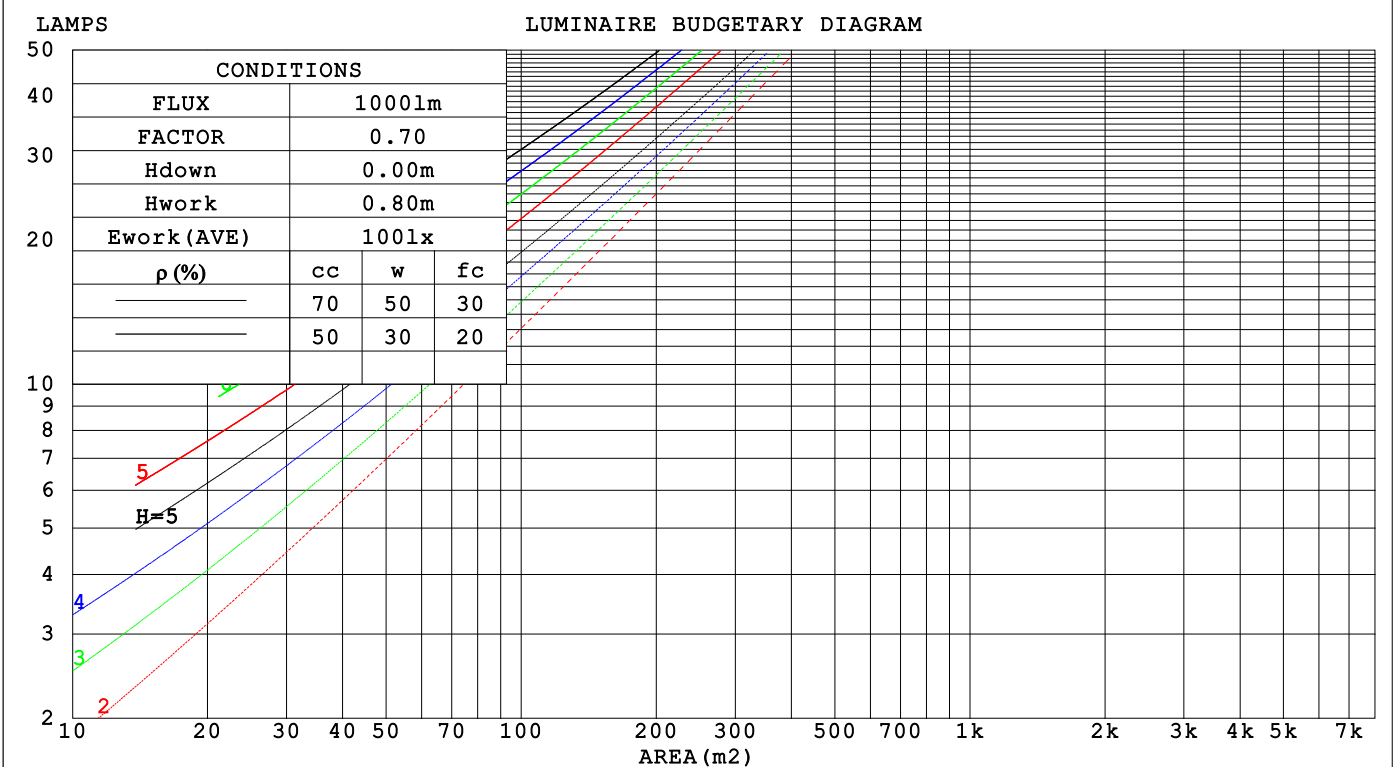
C Range: 0 - 360DEG
 C Interval: 15.0DEG
 Test Speed: HIGH
 Temperature: 25.3°C
 Operators: DAMIN
 Test Date: 2024-06-11

γ Range: 0 - 90DEG
 γ Interval: 1.0DEG
 Test System: EVERFINE GO-2000B_V1 SYSTEM V2.00.473
 Humidity: 65.0%
 Test Distance: 9.401m [K=1.0000]
 Remarks:

CU AND LUMINAIRE BUDGETARY ESTIMATE DIAGRAM

Test:U:220.34V I:0.0814A P:10.492W PF:0.5852 Freq:50.00Hz Lamp Flux:911.943x1 lm		
NAME:	TYPE: 斜角135度	WEIGHT:
SPEC.:	DIM.:	SERIAL No.:
MFR.: EVERFINE	SUR.:	Shielding Angle:

ρ_{cc}	80%			70%			50%			30%			10%			0
ρ_w	50%	30%	10%	50%	30%	10%	50%	30%	10%	50%	30%	10%	50%	30%	10%	0
ρ_{fc}	20%			20%			20%			20%			20%			0
RCR	RCR:Room Cavity Ratio Coefficients of Utilization(CU)															
0.0	1.19	1.19	1.19	1.16	1.16	1.16	1.11	1.11	1.11	1.06	1.06	1.06	1.02	1.02	1.02	1.00
1.0	1.08	1.04	1.01	1.05	1.02	.00	1.01	.99	.97	.97	.95	.94	.94	.92	.91	.89
2.0	.96	.91	.86	.95	.89	.85	.91	.87	.83	.88	.85	.81	.85	.82	.80	.78
3.0	.86	.80	.74	.85	.79	.73	.82	.77	.72	.79	.75	.71	.77	.73	.70	.68
4.0	.78	.70	.64	.76	.69	.64	.74	.68	.63	.72	.66	.62	.70	.65	.61	.59
5.0	.70	.62	.56	.69	.62	.56	.67	.61	.55	.65	.59	.55	.63	.58	.54	.52
6.0	.64	.56	.50	.63	.55	.50	.61	.54	.49	.59	.53	.49	.58	.53	.48	.47
7.0	.58	.50	.45	.57	.50	.44	.56	.49	.44	.54	.48	.44	.53	.48	.44	.42
8.0	.53	.45	.40	.53	.45	.40	.51	.45	.40	.50	.44	.40	.49	.43	.39	.38
9.0	.49	.41	.36	.49	.41	.36	.47	.41	.36	.46	.40	.36	.45	.40	.36	.34
10.0	.45	.38	.33	.45	.38	.33	.44	.37	.33	.43	.37	.33	.42	.37	.33	.31



C Range: 0 - 360DEG
 C Interval: 15.0DEG
 Test Speed: HIGH
 Temperature:25.3°C
 Operators:DAMIN
 Test Date:2024-06-11

γ Range: 0 - 90DEG
 γ Interval: 1.0DEG
 Test System:EVERFINE GO-2000B_V1 SYSTEM V2.00.473
 Humidity:65.0%
 Test Distance:9.401m [K=1.0000]
 Remarks:

WEC AND CCEC

Test:U:220.34V I:0.0814A P:10.492W PF:0.5852 Freq:50.00Hz								
Lamp Flux:911.943x1 lm								
NAME:			TYPE: 斜角135度			WEIGHT:		
SPEC.:			DIM.:			SERIAL No.:		
MFR.: EVERFINE			SUR.:			Shielding Angle:		

ρ _{CC}	80%			70%			50%			30%			10%			0
ρ _w	50%	30%	10%	50%	30%	10%	50%	30%	10%	50%	30%	10%	50%	30%	10%	0
ρ _{fc}	20%			20%			20%			20%			20%			0
RCR	RCR:Room Cavity Ratio						Wall Exitance Coefficients(WEC)									
0.0																
1.0	.238	.135	.043	.231	.132	.042	.218	.125	.040	.207	.119	.038	.196	.113	.037	
2.0	.235	.129	.039	.229	.126	.039	.218	.121	.038	.207	.116	.036	.198	.112	.035	
3.0	.225	.120	.036	.220	.118	.035	.210	.114	.035	.201	.110	.034	.193	.107	.033	
4.0	.214	.111	.033	.209	.109	.032	.200	.106	.032	.192	.103	.031	.185	.100	.031	
5.0	.202	.103	.030	.198	.102	.030	.190	.099	.029	.183	.097	.029	.176	.094	.028	
6.0	.190	.095	.027	.187	.094	.027	.180	.092	.027	.174	.090	.027	.168	.088	.026	
7.0	.180	.089	.025	.177	.088	.025	.170	.086	.025	.165	.084	.025	.159	.083	.024	
8.0	.170	.083	.023	.167	.082	.023	.161	.081	.023	.156	.079	.023	.151	.078	.023	
9.0	.161	.078	.022	.158	.077	.022	.153	.076	.021	.148	.074	.021	.144	.073	.021	
10.0	.152	.073	.020	.150	.072	.020	.145	.071	.020	.141	.070	.020	.137	.069	.020	

ρ _{CC}	80%			70%			50%			30%			10%			0
ρ _w	50%	30%	10%	50%	30%	10%	50%	30%	10%	50%	30%	10%	50%	30%	10%	0
ρ _{fc}	20%			20%			20%			20%			20%			0
RCR	RCR:Room Cavity Ratio						Ceiling Cavity Exitance Coefficients(CCEC)									
0.0																
1.0	.190	.190	.190	.163	.163	.163	.111	.111	.111	.064	.064	.064	.020	.020	.020	
2.0	.175	.157	.140	.150	.135	.121	.103	.093	.083	.059	.054	.048	.019	.017	.016	
3.0	.165	.132	.105	.141	.114	.091	.097	.079	.063	.056	.046	.037	.018	.015	.012	
4.0	.156	.114	.081	.134	.098	.070	.092	.068	.049	.053	.040	.029	.017	.013	.009	
5.0	.148	.100	.064	.127	.087	.055	.087	.060	.039	.051	.035	.023	.016	.012	.008	
6.0	.141	.089	.051	.121	.077	.045	.083	.054	.032	.048	.032	.019	.016	.010	.006	
7.0	.134	.081	.042	.116	.070	.037	.080	.049	.026	.046	.029	.016	.015	.009	.005	
8.0	.128	.074	.036	.110	.064	.031	.076	.045	.022	.044	.026	.013	.014	.009	.004	
9.0	.122	.068	.031	.105	.059	.027	.073	.041	.019	.042	.024	.011	.014	.008	.004	
10.0	.117	.063	.027	.101	.055	.023	.070	.039	.017	.041	.023	.010	.013	.007	.003	

C Range: 0 - 360DEG
 C Interval: 15.0DEG
 Test Speed: HIGH
 Temperature:25.3°C
 Operators:DAMIN
 Test Date:2024-06-11

γ Range: 0 - 90DEG
 γ Interval: 1.0DEG
 Test System:EVERFINE GO-2000B_V1 SYSTEM V2.00.473
 Humidity:65.0%
 Test Distance:9.401m [K=1.0000]
 Remarks:

UGR(Unified Glare Rating) Table

Test:U:220.34V I:0.0814A P:10.492W PF:0.5852 Freq:50.00Hz										
Lamp Flux:911.943x1 lm										
NAME:		TYPE: 斜角135度				WEIGHT:				
SPEC.:		DIM.:				SERIAL No.:				
MFR.: EVERFINE		SUR.:				Shielding Angle:				
ceiling/cavity	0.7	0.7	0.5	0.5	0.3	0.7	0.7	0.5	0.5	0.3
walls	0.5	0.3	0.5	0.3	0.3	0.5	0.3	0.5	0.3	0.3
working plane	0.2	0.2	0.2	0.2	0.2	0.2	0.2	0.2	0.2	0.2
Room dimensions	Viewed crosswise					Viewed endwise				
x = 2H y = 2H	17.3	18.7	17.6	18.9	19.1	17.9	19.2	18.1	19.4	19.6
3H	17.4	18.6	17.7	18.9	19.1	17.8	19.0	18.1	19.2	19.5
4H	17.3	18.5	17.6	18.7	19.0	17.7	18.9	18.0	19.1	19.3
6H	17.2	18.3	17.6	18.6	18.8	17.6	18.7	17.9	18.9	19.2
8H	17.2	18.2	17.5	18.5	18.8	17.6	18.6	17.9	18.9	19.1
12H	17.1	18.1	17.5	18.4	18.7	17.5	18.5	17.8	18.8	19.1
4H 2H	17.6	18.7	17.9	19.0	19.2	18.0	19.2	18.3	19.4	19.7
3H	17.7	18.7	18.0	19.0	19.2	17.9	18.9	18.3	19.2	19.5
4H	17.6	18.5	18.0	18.8	19.1	17.9	18.7	18.2	19.1	19.4
6H	17.5	18.3	17.9	18.6	19.0	17.8	18.5	18.2	18.9	19.2
8H	17.5	18.2	17.9	18.6	18.9	17.7	18.4	18.1	18.8	19.2
12H	17.4	18.1	17.9	18.5	18.9	17.7	18.3	18.1	18.7	19.1
8H 4H	17.5	18.2	17.9	18.5	18.9	17.7	18.5	18.1	18.8	19.2
6H	17.4	18.0	17.8	18.4	18.8	17.6	18.2	18.1	18.6	19.1
8H	17.4	17.9	17.8	18.3	18.7	17.6	18.1	18.1	18.6	19.0
12H	17.3	17.8	17.8	18.2	18.7	17.6	18.0	18.0	18.5	18.9
12H 4H	17.4	18.1	17.8	18.5	18.9	17.7	18.3	18.1	18.7	19.1
6H	17.3	17.9	17.8	18.3	18.7	17.6	18.1	18.1	18.5	19.0
8H	17.3	17.8	17.8	18.2	18.7	17.6	18.0	18.0	18.5	18.9
Variations with the observer position at spacings(CIE Pub.117):										
S = 1.0H	+ 0.7 / - 0.9					+ 0.6 / - 0.8				
1.5H	+ 0.5 / - 1.2					+ 0.9 / - 1.6				
2.0H	+ 1.3 / - 2.1					+ 1.3 / - 1.8				

CIE Pub.117, 911.9 lm Total Lamp Luminous Flux Correct (8log(F/F0) = -0.3)
 Area: 0.1 m2

C Range: 0 - 360DEG
 C Interval: 15.0DEG
 Test Speed: HIGH
 Temperature:25.3°C
 Operators:DAMIN
 Test Date:2024-06-11

γ Range: 0 - 90DEG
 γ Interval: 1.0DEG
 Test System:EVERFINE GO-2000B_V1 SYSTEM V2.00.473
 Humidity:65.0%
 Test Distance:9.401m [K=1.0000]
 Remarks:

UTILIZATION FACTORS TABLE

Test:U:220.34V I:0.0814A P:10.492W PF:0.5852 Freq:50.00Hz Lamp Flux:911.943x1 lm		
NAME:	TYPE: 斜角135度	WEIGHT:
SPEC.:	DIM.:	SERIAL No.:
MFR.: EVERFINE	SUR.:	Shielding Angle:

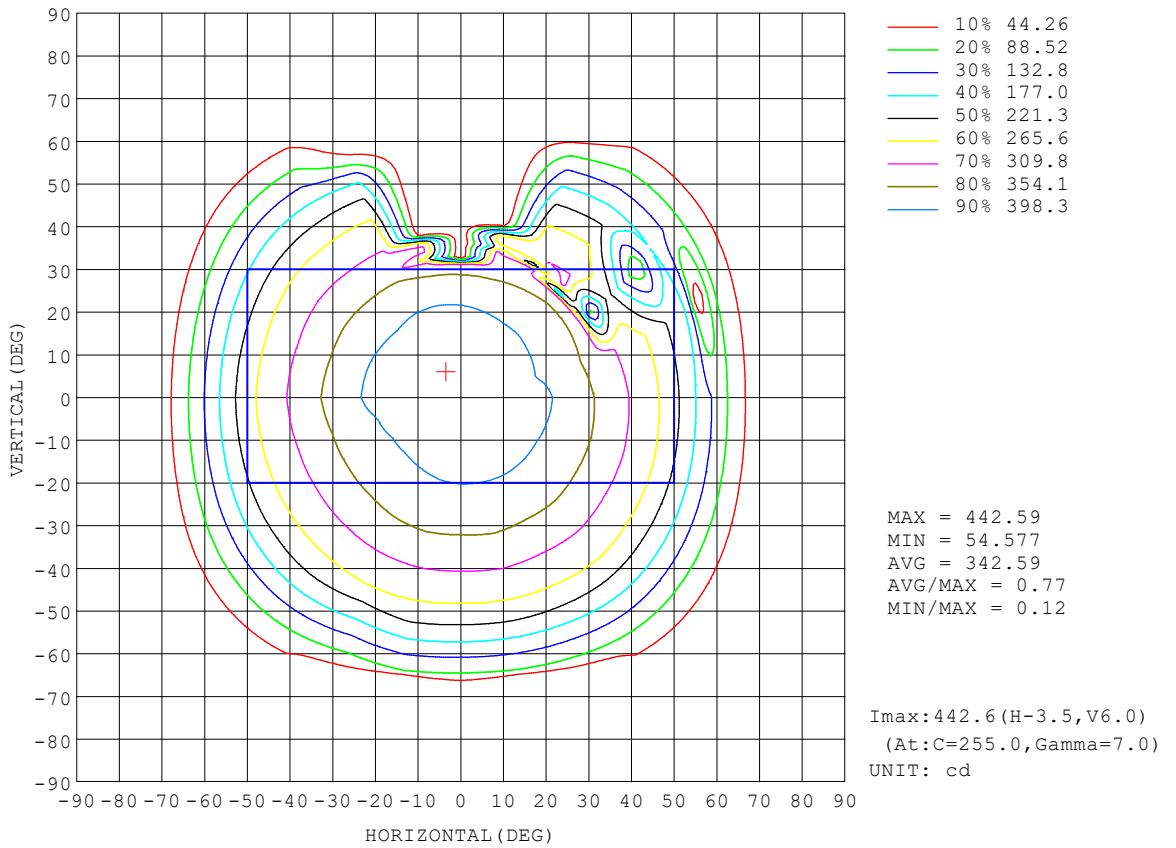
REFLECTANCE										
Ceiling	0.8	0.8	0.8	0.7	0.7	0.7	0.5	0.5	0.5	0
Walls	0.7	0.5	0.3	0.7	0.5	0.3	0.7	0.5	0.3	0
Working plane	0.2	0.2	0.2	0.2	0.2	0.2	0.2	0.2	0.2	0
ROOM INDEX	UTILIZATION FACTORS (PERCENT) $k(RI) \times RCR = 5$									
k = 0.60	64	54	48	64	54	48	63	53	47	42
0.80	75	65	59	74	65	58	72	64	58	52
1.00	84	74	68	83	74	68	81	75	68	62
1.25	91	82	76	89	81	76	87	80	75	69
1.50	95	87	82	94	86	81	91	85	80	74
2.00	101	94	89	99	93	89	96	91	87	80
2.50	104	98	93	102	97	92	99	94	90	83
3.00	107	101	97	105	100	96	101	97	94	86
4.00	110	105	102	107	104	100	103	100	98	90
5.00	111	108	105	109	106	103	105	102	100	91
ROOM INDEX	UF(total)									Direct
According to DIN EN 13032-2 2004			Suspended				SHRNOM = 1.25			

C Range: 0 - 360DEG
 C Interval: 15.0DEG
 Test Speed: HIGH
 Temperature:25.3°C
 Operators:DAMIN
 Test Date:2024-06-11

γ Range: 0 - 90DEG
 γ Interval: 1.0DEG
 Test System:EVERFINE GO-2000B_V1 SYSTEM V2.00.473
 Humidity:65.0%
 Test Distance:9.401m [K=1.0000]
 Remarks:

ISOCANDELA DIAGRAM

Test:U:220.34V I:0.0814A P:10.492W PF:0.5852 Freq:50.00Hz Lamp Flux:911.943x1 lm		
NAME:	TYPE: 斜角135度	WEIGHT:
SPEC.:	DIM.:	SERIAL No.:
MFR.: EVERFINE	SUR.:	Shielding Angle:

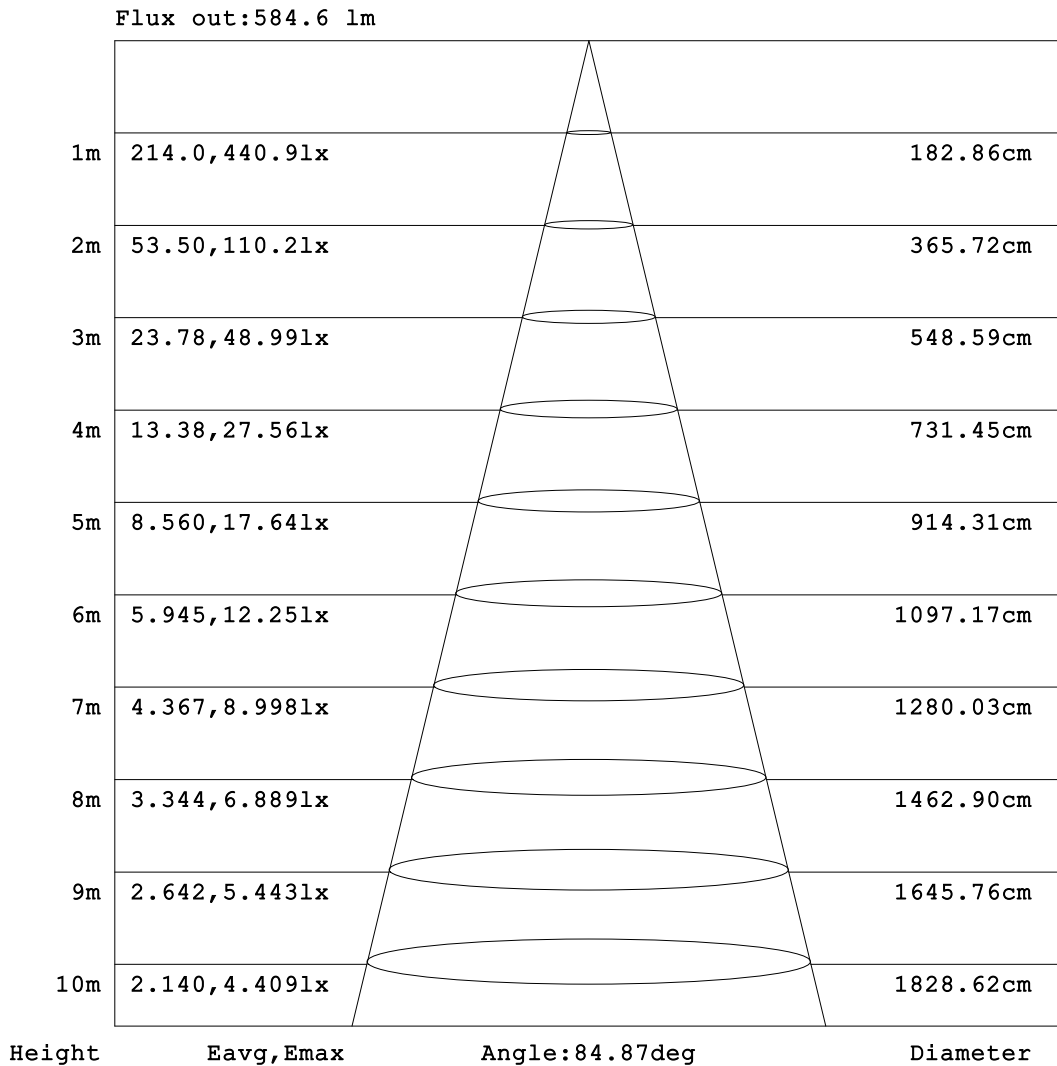


C Range: 0 - 360DEG
 C Interval: 15.0DEG
 Test Speed: HIGH
 Temperature: 25.3°C
 Operators: DAMIN
 Test Date: 2024-06-11

γ Range: 0 - 90DEG
 γ Interval: 1.0DEG
 Test System: EVERFINE GO-2000B_V1 SYSTEM V2.00.473
 Humidity: 65.0%
 Test Distance: 9.401m [K=1.0000]
 Remarks:

AAI Figure

Test:U:220.34V I:0.0814A P:10.492W PF:0.5852 Freq:50.00Hz Lamp Flux:911.943x1 lm		
NAME:	TYPE: 斜角135度	WEIGHT:
SPEC.:	DIM.:	SERIAL No.:
MFR.: EVERFINE	SUR.:	Shielding Angle:



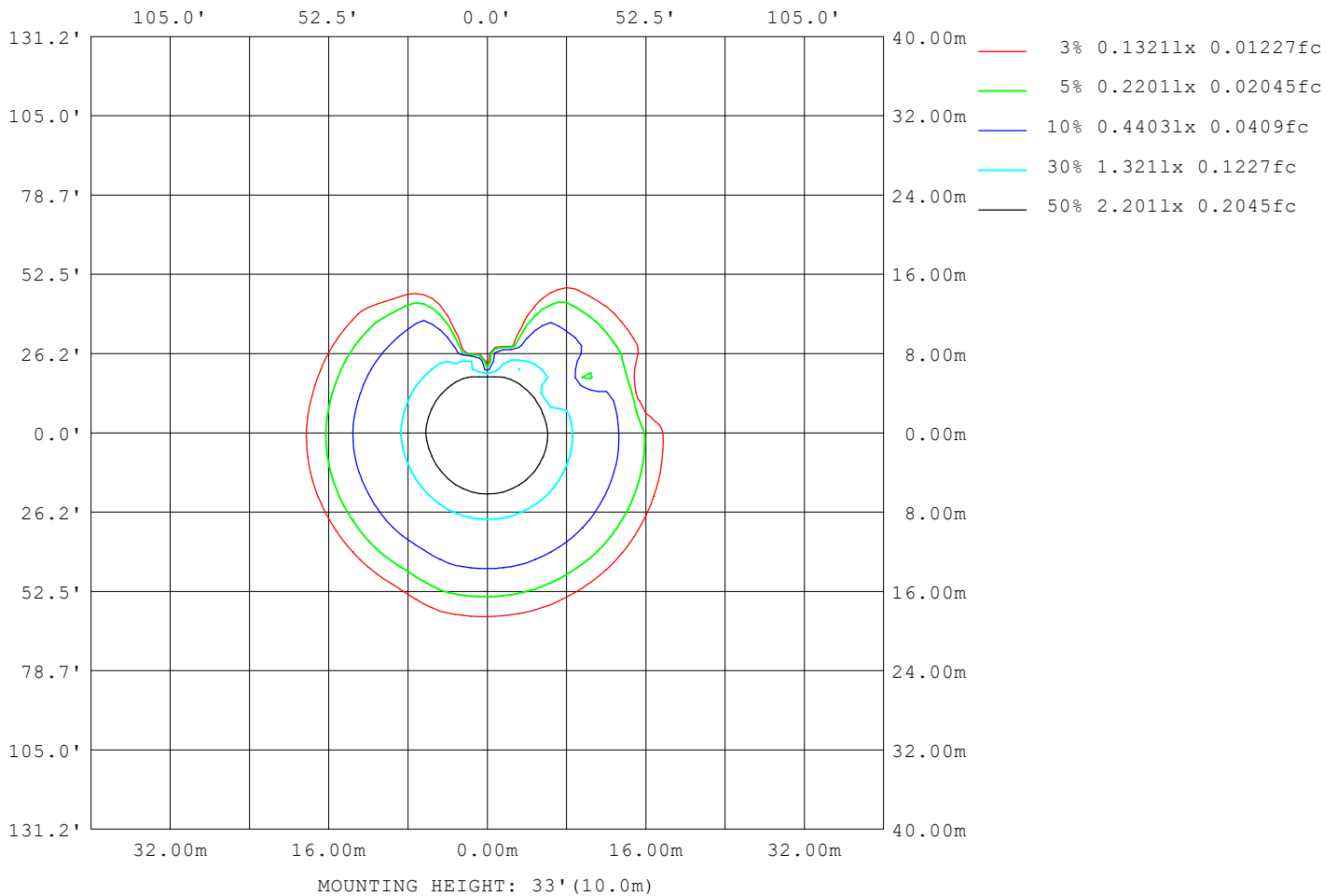
Note:The Curves indicate the illuminated area and the average illumination when the luminaire is at different distance.

C Range: 0 - 360DEG
 C Interval: 15.0DEG
 Test Speed: HIGH
 Temperature:25.3°C
 Operators:DAMIN
 Test Date:2024-06-11

γ Range: 0 - 90DEG
 γ Interval: 1.0DEG
 Test System:EVERFINE GO-2000B_V1 SYSTEM V2.00.473
 Humidity:65.0%
 Test Distance:9.401m [K=1.0000]
 Remarks:

ISOLUX DIAGRAM

Test:U:220.34V I:0.0814A P:10.492W PF:0.5852 Freq:50.00Hz Lamp Flux:911.943x1 lm		
NAME:	TYPE: 斜角135度	WEIGHT:
SPEC.:	DIM.:	SERIAL No.:
MFR.: EVERFINE	SUR.:	Shielding Angle:



C Range: 0 - 360DEG
 C Interval: 15.0DEG
 Test Speed: HIGH
 Temperature:25.3°C
 Operators:DAMIN
 Test Date:2024-06-11

γ Range: 0 - 90DEG
 γ Interval: 1.0DEG
 Test System:EVERFINE GO-2000B_V1 SYSTEM V2.00.473
 Humidity:65.0%
 Test Distance:9.401m [K=1.0000]
 Remarks:

LED Avg.L Report

Test:U:220.34V I:0.0814A P:10.492W PF:0.5852 Freq:50.00Hz Lamp Flux:911.943x1 lm		
NAME:	TYPE: 斜角135度	WEIGHT:
SPEC.:	DIM.:	SERIAL No.:
MFR.: EVERFINE	SUR.:	Shielding Angle:

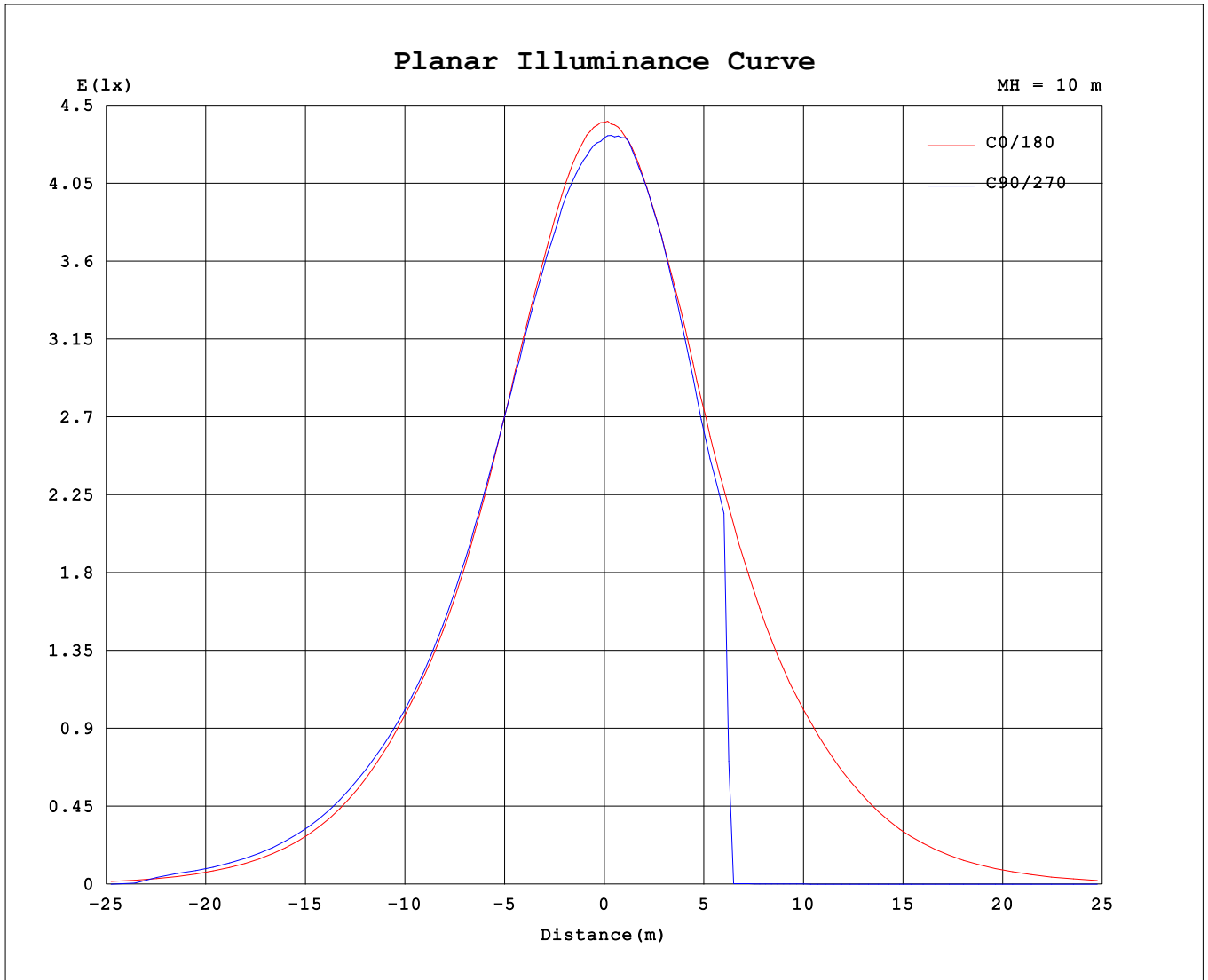
AvgL	cd/m2
L_0~180 (65) av	1571
L_0~180 (75) av	36
L_0~180 (85) av	43
L_90~270 (65) av	993
L_90~270 (75) av	31
L_90~270 (85) av	78
L_45 (65) av	1567
L_45 (75) av	65
L_45 (85) av	102

Standard: GB/T 29293-2012

C Range: 0 - 360DEG
 C Interval: 15.0DEG
 Test Speed: HIGH
 Temperature:25.3°C
 Operators:DAMIN
 Test Date:2024-06-11

γ Range: 0 - 90DEG
 γ Interval: 1.0DEG
 Test System:EVERFINE GO-2000B_V1 SYSTEM V2.00.473
 Humidity:65.0%
 Test Distance:9.401m [K=1.0000]
 Remarks:

Planar Illuminance Curve



C Range: 0 - 360DEG
 C Interval: 15.0DEG
 Test Speed: HIGH
 Temperature: 25.3°C
 Operators: DAMIN
 Test Date: 2024-06-11

γ Range: 0 - 90DEG
 γ Interval: 1.0DEG
 Test System: EVERFINE GO-2000B_V1 SYSTEM V2.00.473
 Humidity: 65.0%
 Test Distance: 9.401m [K=1.0000]
 Remarks:

